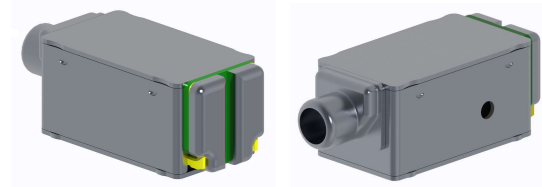


Product Features:

Proprietary design delivers first-in-class output / size ratio with low THD
Enhanced bass performance
RoHS compliant
IPx7 compliant

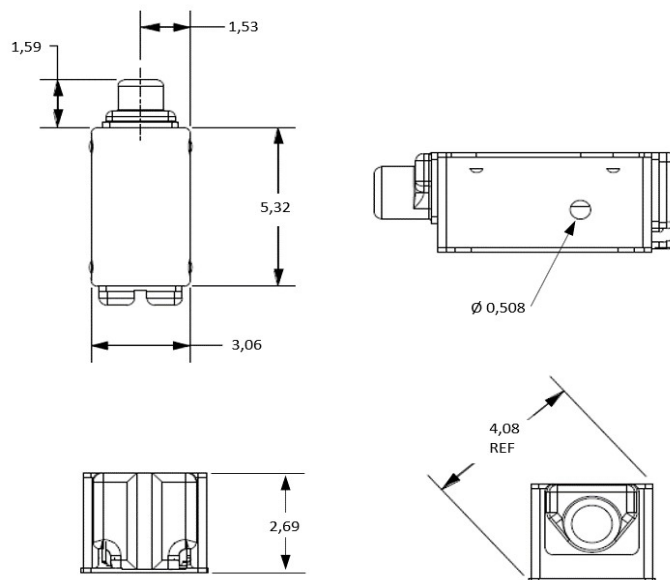


Typical Performance at 1kHz

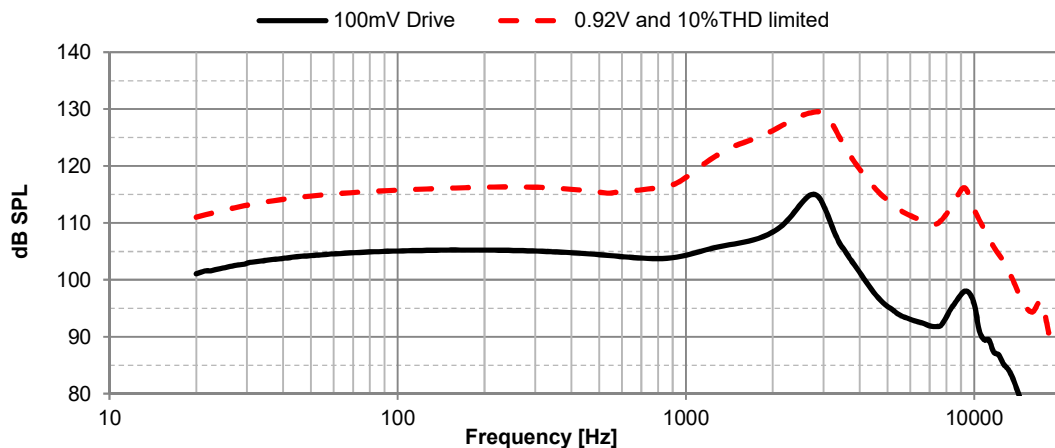
Tested direct into 711 HiRes Coupler

Parameter	Typical	Units	Comments
Impedance	39	Ohms	
Sensitivity	104	dB SPL	100mV voltage drive
	109	dB SPL	1mW power drive
	118	dB SPL	10% THD and 0.92 Vrms limited
THD	0.5	%	@ 94 dB SPL
	0.9	%	@ 100 dB SPL

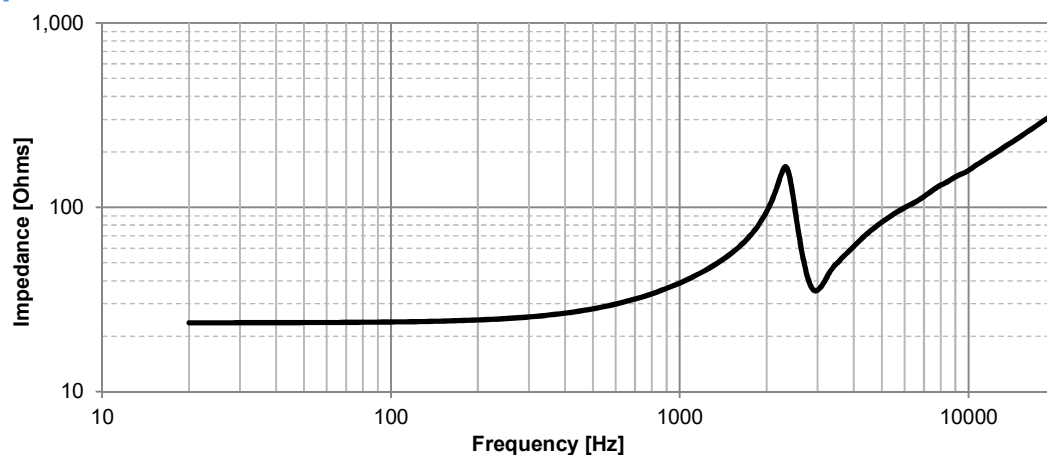
Outline Drawing: dimensions in mm



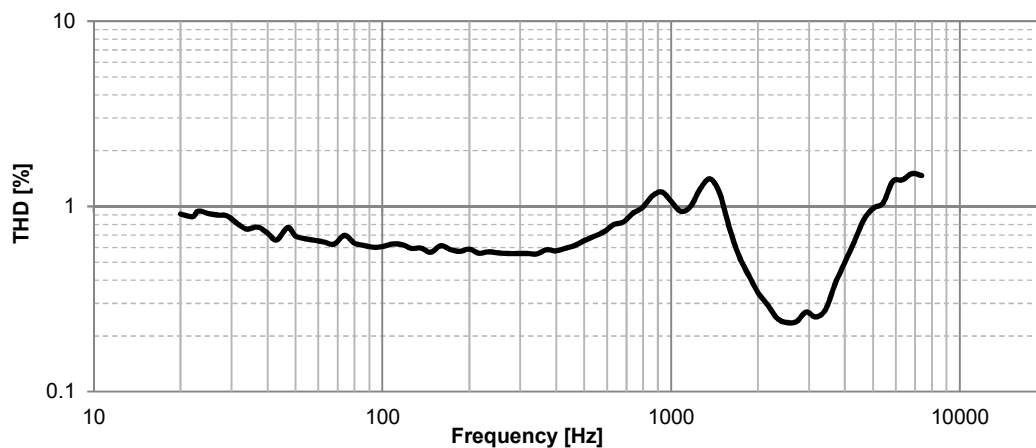
Frequency Response and Saturation



Impedance



THD



Notes

- Ask about custom assembly options (lead wires, customer-specified materials, etc.)
- To prevent heat damage, follow soldering guidelines in application note AN13 (knowles.com)
- Measurement data for reference only. Refer to model specification for full dimensions and performance.